



# MELTDOWN GLASS ART & DESIGN

Kiln-Fired Glass for Art & Architecture

[www.meltdownglass.com](http://www.meltdownglass.com)

800-845-6221

## MD212 Myst

Maximum Individual Panel Size:  
90" x 150"

Available Thicknesses:  
1/4", 3/8", 1/2", 5/8", 3/4"

Glass Types Available:  
Clear, Low-Iron, Tinted

Safety Ratings Available:  
Tempered, Laminated, Fire / Bullet / Blast

Fabrication Options:  
Insulated, Curved, Drilled, etc.

Color Options:  
Tinted, Fused Color, Cold-Applied Color, Versicolor,  
Bubbleglass, Hand-Painted

Treatment Options:  
Frost, Dichroic



SQUIRE SANDERS- PHOENIX, AZ  
- Kiln-Fired Tempered Glass for Elevator Bank  
- Shown in MD212 Myst 1/2" Clear  
- Frosted on Textured Side

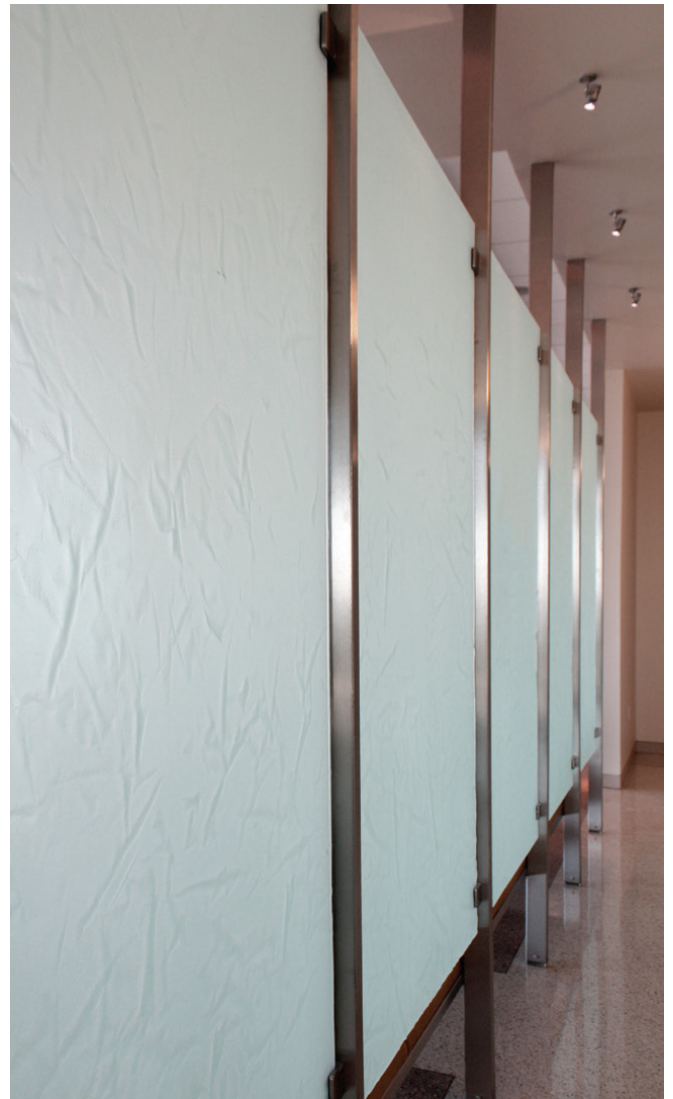


# MELTDOWN GLASS ART & DESIGN

Kiln-Fired Glass for Art & Architecture

[www.meltdownglass.com](http://www.meltdownglass.com)  
800-845-6221

- SQUIRE SANDERS- PHOENIX, AZ
- Kiln-Fired Tempered Glass for Interior Partition
- Shown in MD212 Myst 1/2" Clear
- Frosted on Textured Side



- SQUIRE SANDERS- PHOENIX, AZ
- Kiln-Fired Tempered Glass for Reception Desk
- Shown in MD212 Myst 1/2" Clear
- Frosted on Textured Side





# MELTDOWN GLASS ART & DESIGN

Kiln-Fired Glass for Art & Architecture

[www.meltdownglass.com](http://www.meltdownglass.com)  
800-845-6221



MANSUETTO VENTURES- NEW YORK, NY  
- Kiln-Fired Tempered Glass for Interior Privacy Panels  
- Shown in MD212 Myst 1/4" Starphire